

---

# Experimental verification and comparison of analytical and FE models for calculation of a bitter solenoid

## Part II: Numerical simulation

Dr.-Ing. Vladimir Kolchuzhin  
Chemnitz University of Technology, Chemnitz, Germany

## I<sup>2</sup>FG Workshop on Impulse Forming

Gent, 7 May 2013

# Content

---

- introduction
- study of coil system by 3D BEM analysis
- study of coil system by 2D FEM analysis
- parametric study of coil system by 3D FEM analysis
- conclusions and outlook

## Appropriate and available Software



### LS-DYNA v980a MPP alpha

- 980 alpha version contains em-modul in test stage
- first tests show capability for highly nonlinear mechanical problems (contact, material)
- mag. materials (nonlinear B-H dependency → ferromagnetic materials) are non-implemented



### ANSYS 14.0



- circuit coupled and multiphysics capability
- nonlinear magnetic capability for modeling B-H curves
- coupling method between magnetic and electric degrees of freedom (low-frequency formulation)

ANSOFT Maxwell (2D/3D FEM) (*now part of ANSYS*)

FEMM (2D FEM)

COMSOL\* (2D/3D FEM)

QuickField\* (2D FEM)

FastHenry (3D BEM)

*\*multiphysics capability*

## Our Research Profile

- Design of microsystems (sensors and actuators) and their application in a device environment
- **Modeling, simulation and experimental** validation of the behavior of microsystems
- **Development of design tools and methods**
- Characterization of MEMS and precision engineered structures
- Measurement and test technology for microsystems

### Hardware

Workstation  
Intel® Core™ i7-3930K CPU @3.20GHz  
**64.0GB RAM**

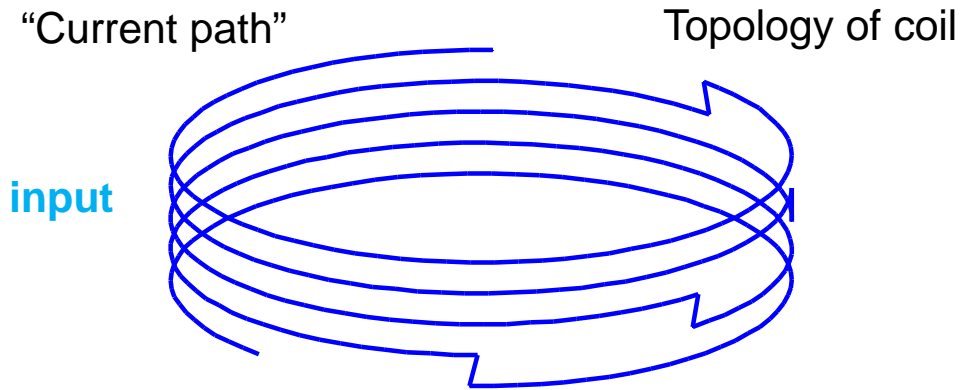
### Software

- **ANSYS Academic Associate product**
- ANSYS Academic Research product
  
- ANSYS Simplorer
- MathCad
- MATLAB

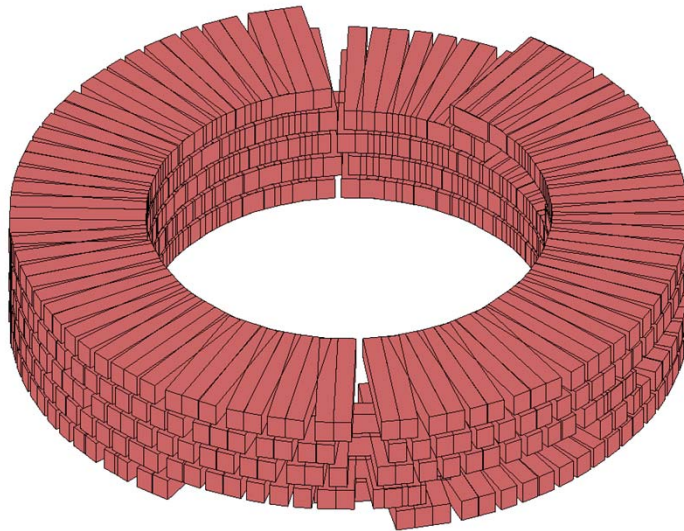
<http://www.tu-chemnitz.de/etit/microsys>

# 3D BEM

output: Impedance matrix  $Z=R+jL$



3D model



## FastHenry from MIT

[http://www.rle.mit.edu/cpg/research\\_codes.htm](http://www.rle.mit.edu/cpg/research_codes.htm)

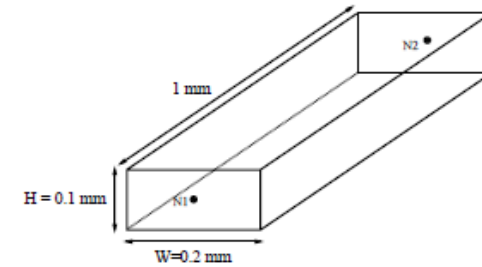


Figure 1: Example Segment for Sample Input File

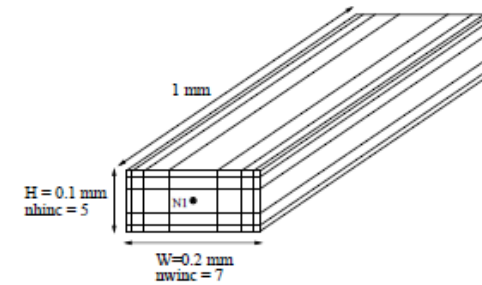
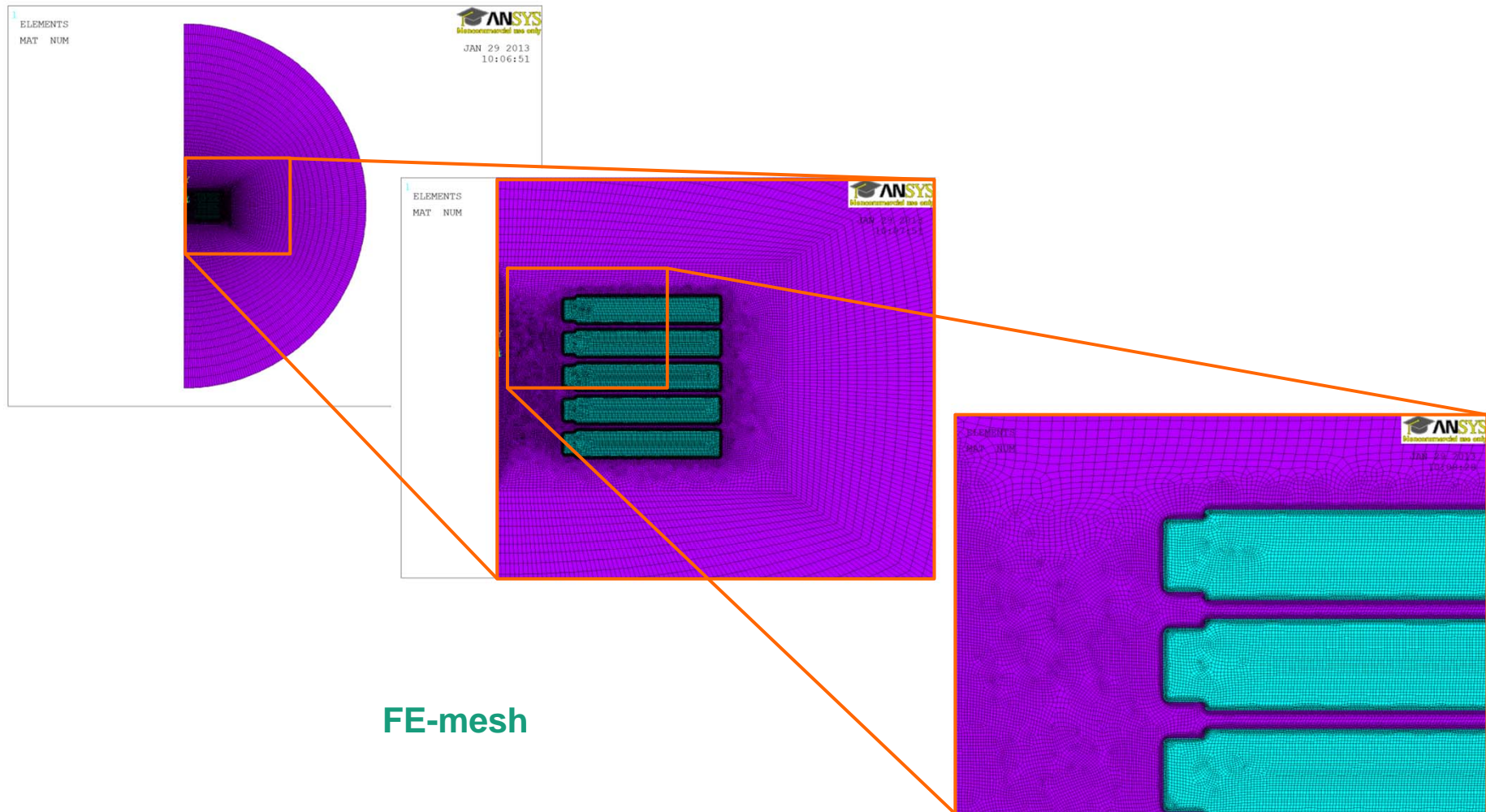


Figure 2: Segment discretized into 35 filaments

file.inp

```
N1 x=1.50e+01 y=0.00e+00 z=0.00e+00
N2 x=1.80e+01 y=0.00e+00 z=0.00e+00
E1 N1 N2 w=9.0 h=4.0
```

## 2D axisymmetric MVP FE analysis in ANSYS



## 2D axisymmetric MVP FE analysis in ANSYS

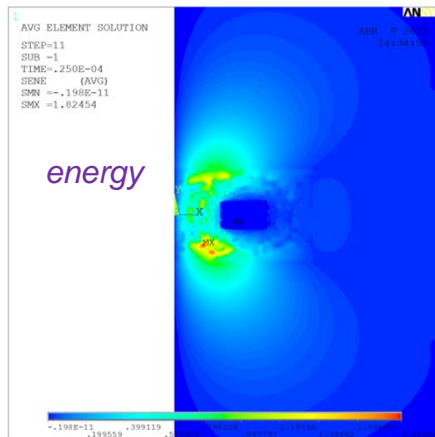
**PLANE53** (quadratic) element

$$\rho = 4.0E-8 \text{ Ohm}\cdot\text{m}$$

$$L = \frac{2W_{mag}}{I^2}$$

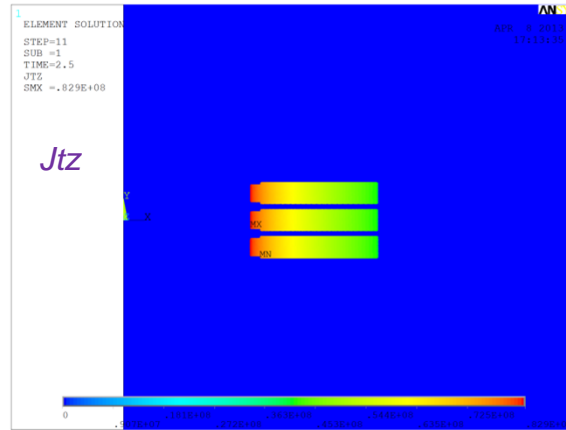
$$R = \frac{P_{rms}}{I_{rms}^2}$$

$f=10\text{kHz}$ ,  $I=75\text{kA}$



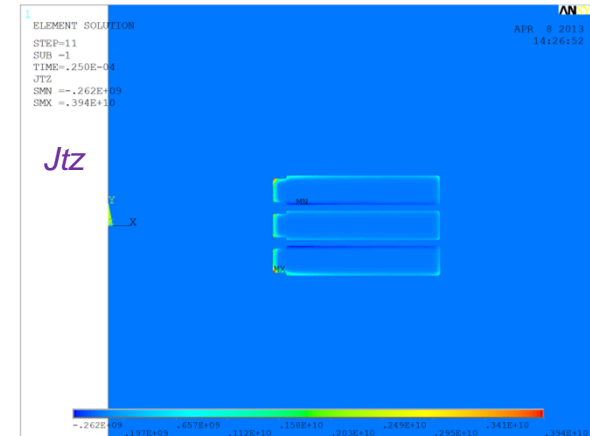
$N_{turn}=3$

$f=0.1 \text{ Hz}$ ,  $I=75\text{kA}$

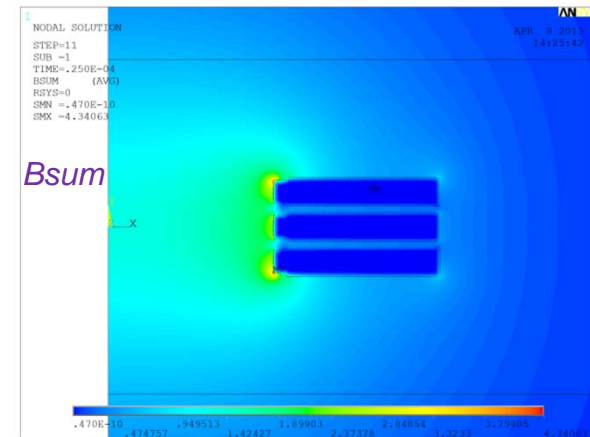
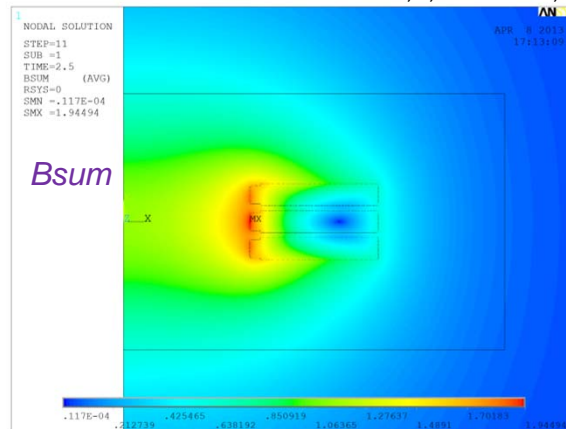


transient analysis

$f=10\text{kHz}$ ,  $I=75\text{kA}$



ET,1,PLANE53,1,,1



$$R_{coil}(0.1) = 71.232 \mu\text{Ohm}$$

$$L_{coil}(0.1) = 2.131 \mu\text{H}$$

$$R_{coil}(f) = 994.251 \mu\text{Ohm}$$

$$L_{coil}(f) = 1.608 \mu\text{H} \quad \checkmark$$

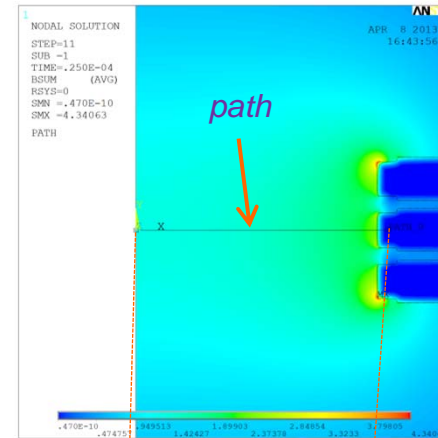
# 2D axisymmetric MVP FE analysis in ANSYS

transient analysis

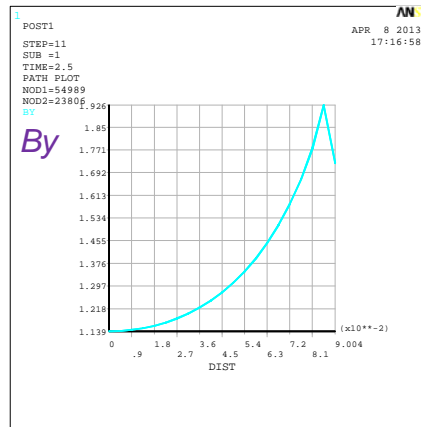
PLANE53 (quadratic) element

$$\rho = 4.0E-8 \text{ Ohm}\cdot\text{m}$$

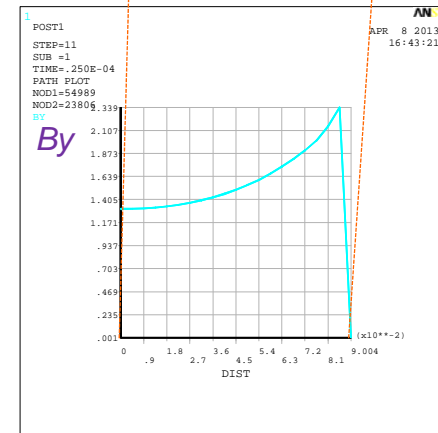
$f=10\text{kHz}$ ,  $I=75\text{kA}$



$f=0.1 \text{ Hz}$ ,  $I=75\text{kA}$



$B_y=1.4\dots 1.9 \text{ T}$



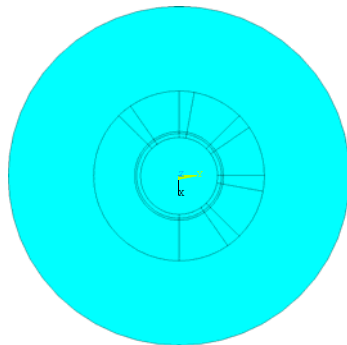
$B_y=1.3\dots 2.3 \text{ T}$  ✓



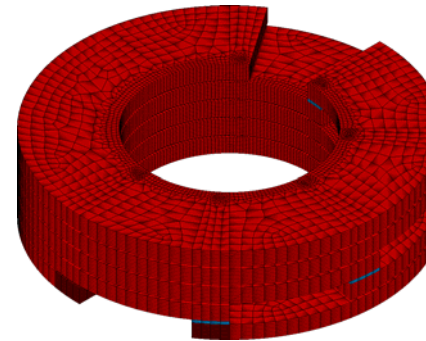
## 3D edge-flux formulation FE analysis in ANSYS

---

2D model



3D model



Generates volumes by dragging an area pattern along a path

**Solid236**

3D edge-flux formulation

Model status:

number of nodes = 5 775 365

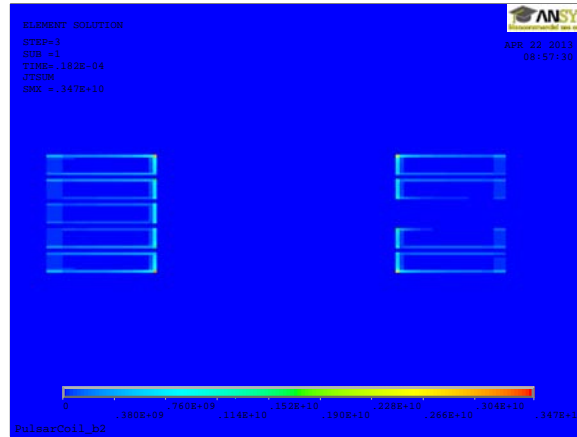
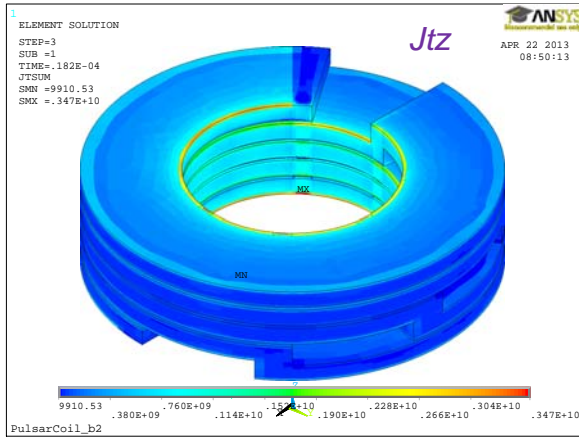
number of elements = 1 438 560

number of edge-flux DoF = 4 325 372

number of equations = 3 253 926

**solution time: 6:44 h**

## 3D edge-flux formulation FE analysis in ANSYS



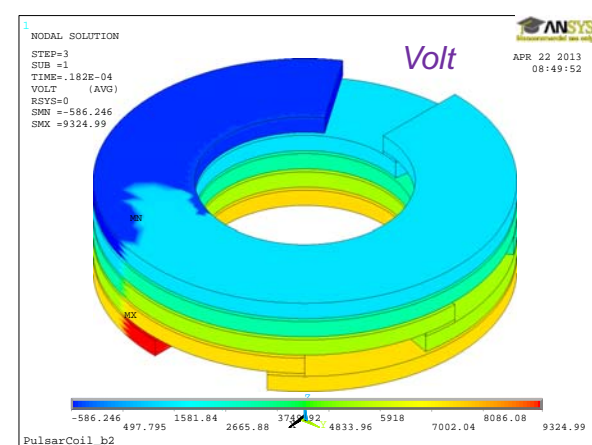
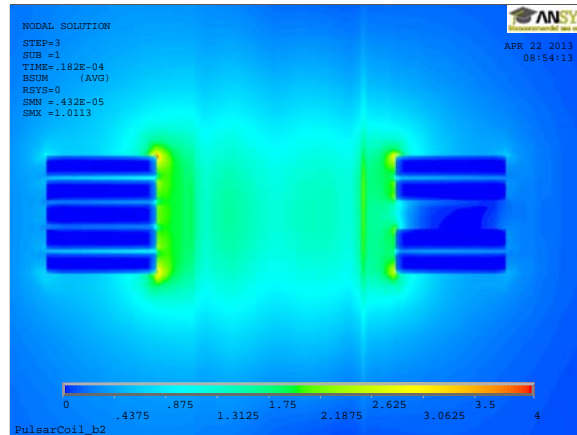
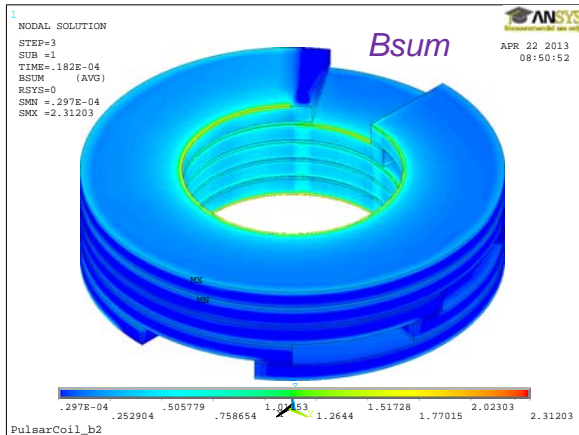
$$\rho = 4.0E-8 \text{ Ohm}\cdot\text{m}$$

$$f=10\text{kHz}, I=75\text{kA}$$

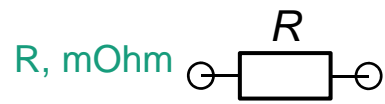
transient analysis

$$R_{\text{coil}}(f) = 1.943 \text{ mOhm}$$

$$L_{\text{coil}}(f) = 2.446 \mu\text{H}$$

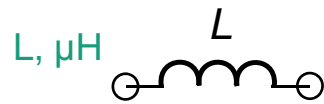
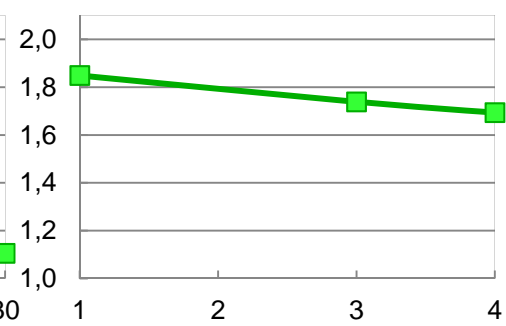
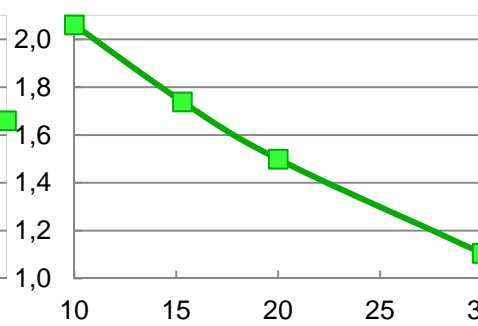
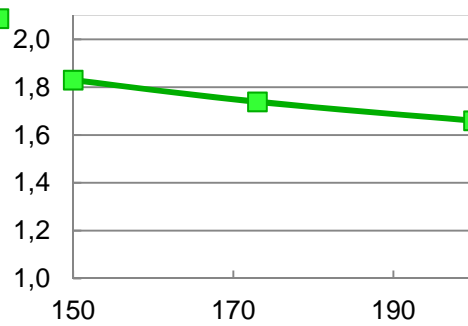
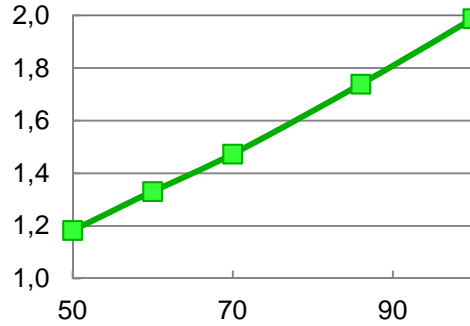


## Parametric study



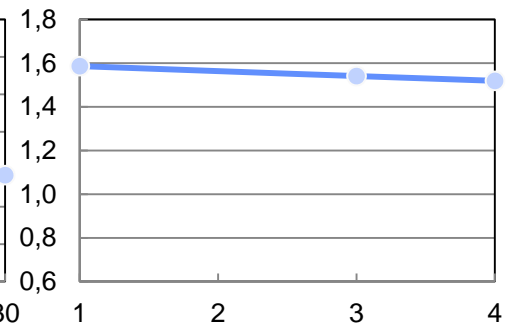
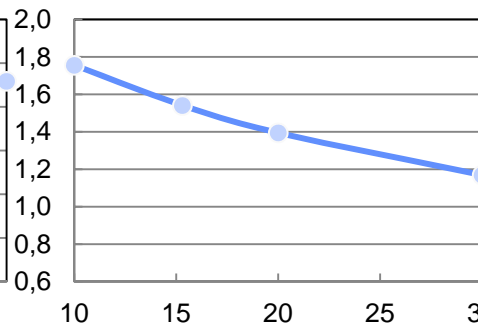
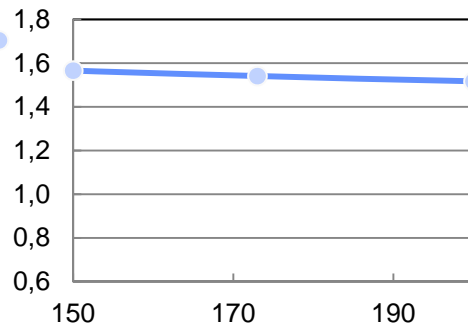
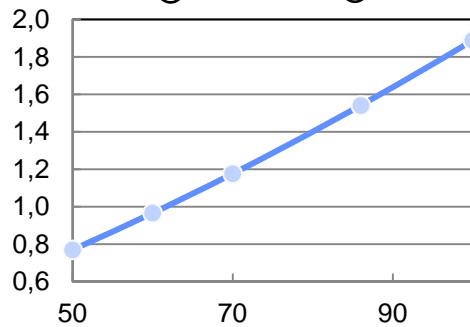
$$R_{dc} = \rho \frac{L}{A}$$

R, mOhm



$$L = \eta^2 \frac{\mu_0 r_1 \Lambda(\alpha, \beta)}{4\pi}$$

L, μH



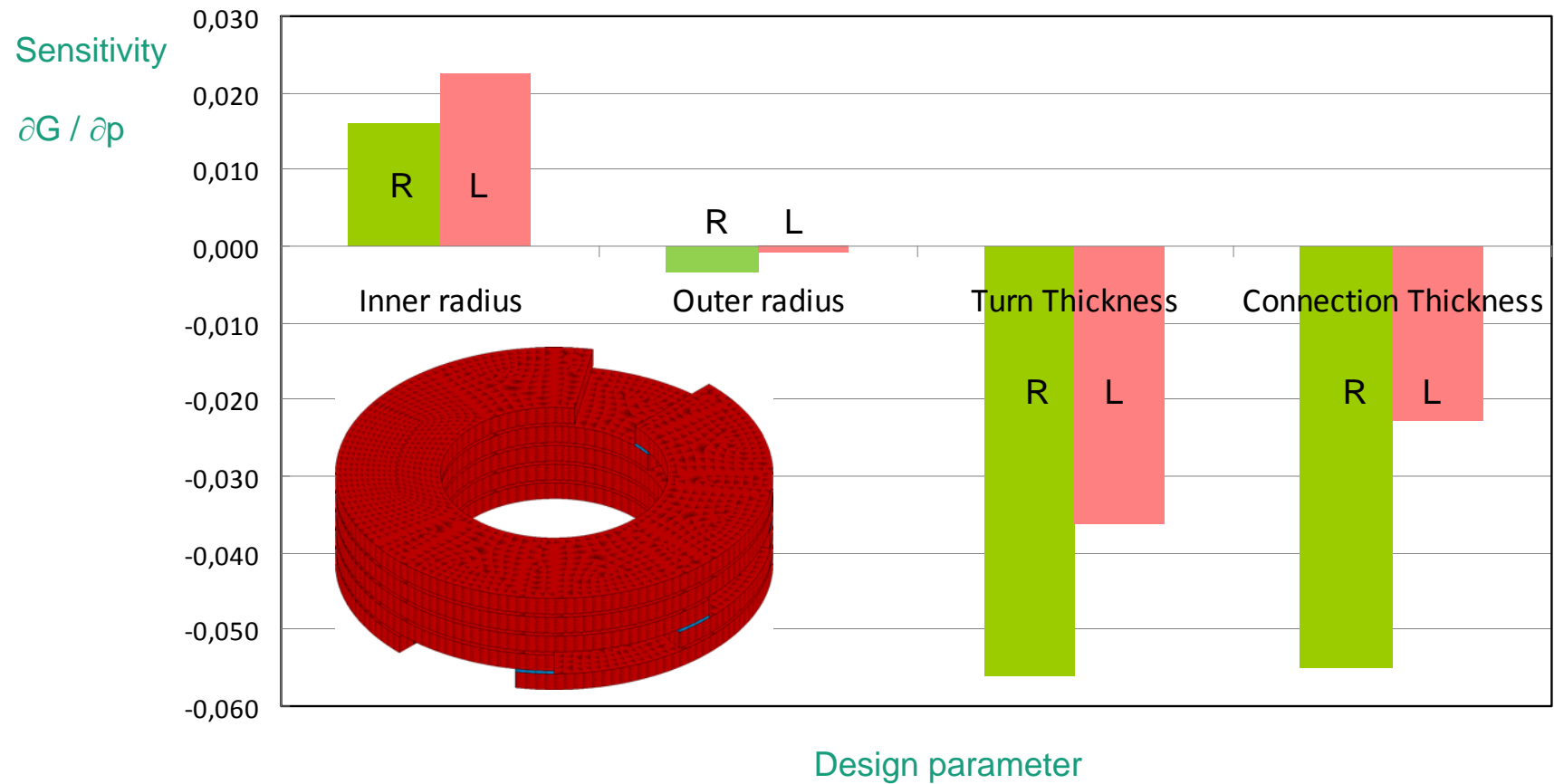
Inner radius,  
mm

Outer radius,  
mm

Turn thickness,  
mm

Connection thickness,  
mm

## Sensitivity analysis



## Results

Software	Analysis type	R, mOhm	L, $\mu$ H	B, T
FastHenry 3D	dc	0.152	6.914	n.a.
	ac 10kHz	3.616	6.013	n.a.
ANSYS 3D electro-conductivity	dc	0.109	n.a.	n.a.
ANSYS 2D emag	0.1 Hz 3 turn*	0.071	2.131	1.4...1.9
	10kHz 3 turn*	0.994	1.608	1.3...2.3
FEMM 2D	10kHz 3 turn*	-	-	1.4...2.4
ANSYS 3D emag	dc	0.110	4.093	-
	ac 0.1 Hz	0.110	2.047	1.30...2.23
	ac 10kHz	3.478	1.541	1.45...2.17
Analytical	10kHz	6.588	1.838	1.2
Experimental	10kHz	7.441	1.504	0.76...1.9

## Conclusions and Outlook

---

A short conclusion is given in the following:

- parametric study of coil system by 3D BEM and FEM analyses has been presented

Further work will be focused on:

- iterative verification and validation of presented models
- application of efficient algorithm (e.g. Variational Technology method within ANSYS)

The end

---

**Thank You for Your Attention!**